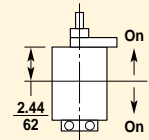




■ **Specifications**

<b>Material</b>
<b>Cable:</b> Hypalon
<b>Float:</b> PVC
<b>Guard:</b> PVC
<b>Protection:</b> IP68
<b>Float Size:</b> Ø65 x 80 mm
<b>Output Contact Rating:</b> SPST, NO or NC, 5 VA, 1 A AC Max., 264 AC Max. 15 W, 1 A DC Max., 200 V DC Max. (resistive)
<b>Minimum SG:</b> 0.7 or 0.95
<b>Operating Point in Water (SG=1.0):</b> Up ON at 2.44 in. (62 mm); Down ON at 2.44 in. (62 mm) from top of the guard.
<b>Operating Temperature:</b> 14 to 122°F (-10 to 50°C)
<b>Maximum Pressure:</b> 29 psi (2 bar)
<b>Life Expectancy:</b> 10 <sup>6</sup>
<b>Weight in Air:</b> Approx. 2.2 lb. (1 kg)



liquid level sensing

**FCN**

**Cable Suspended Float Level Sensors**

- Usable in corrosive liquids
- Mounts in limited overhead space
- Stable in turbulent liquids
- Adjustable switch operating levels
- Reliable/long switch life

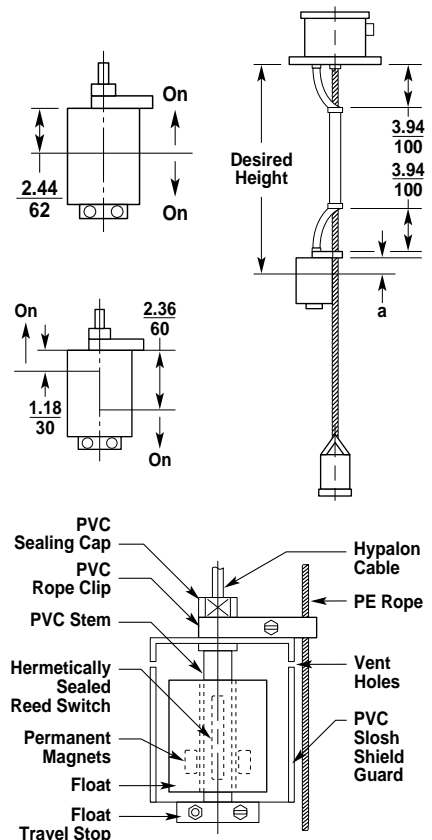
The FCN series guard floats are designed for use in applications where the actuation level is too deep for a rigid stem, where overhead space is limited, or where there is surface wave motion. The PVC or

polypropylene float and Hypalon cable are compatible with a wide range of corrosive liquids.

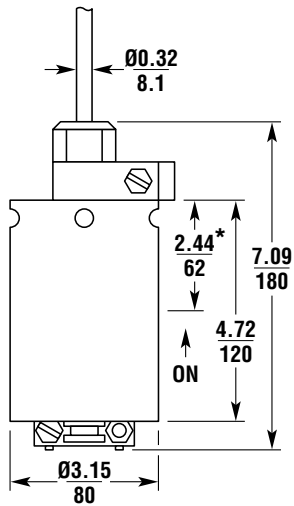
The FCN consists of a float on a stem with a reed switch inside the stem. As the float rises or falls with the level of the liquid, the reed switch is activated by a permanent magnet in the float. The float is protected from turbulence and motion by a PVC slosh shield. Standard Hypalon cable lengths are 19 ft. (6 m).

The switch operating levels are easily adjusted by altering the height of the cable fixing point.

Contact STI to create a multiple switching combination of FCN units.

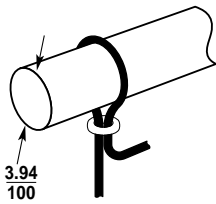


■ **Dimensions —in./mm**

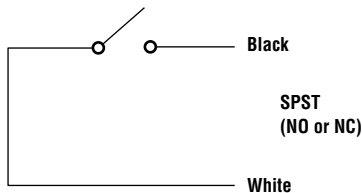


The switch operation, falling on is easily changed by inverting the float. (Actuation level does not move (\*))

Attach cable to suspension arm or cross brace with minimum dimension:



■ **Wiring**



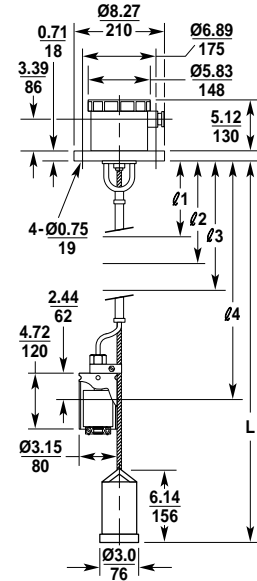
■ **Technical Notes**

The switch operation, NO or NC, are easily changed by inverting the float.

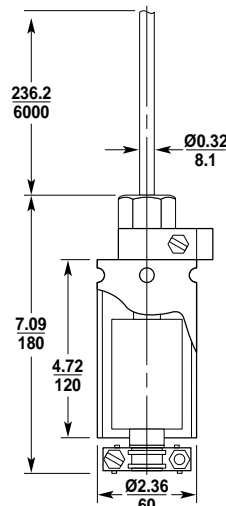
■ **Intrinsic Safety**

Any of the STI float switch level controls may be used with STI Intrinsic Safety Barriers (IS) to meet hazardous location requirements for level control device. See the STI Machine and Process Safeguarding catalog for complete information.

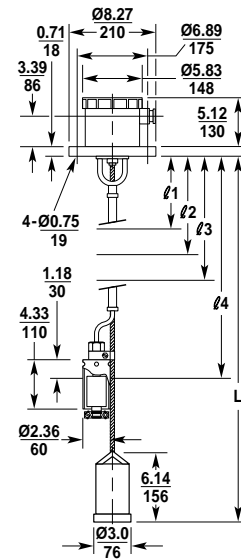
Multiple Float Assembly for Wide Floats



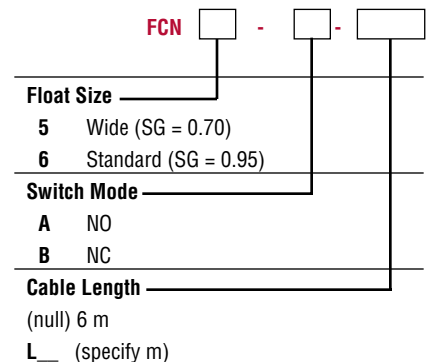
Standard Float for 0.95 SG



Multiple Float Assembly for Standard Floats



■ **Ordering Information**



liquid level sensing