

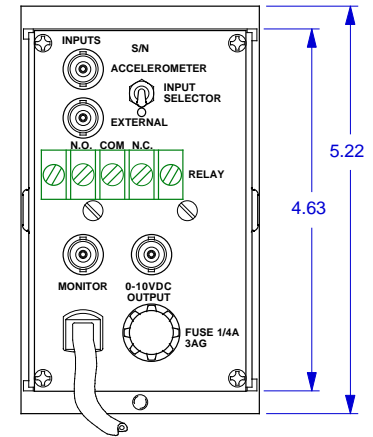
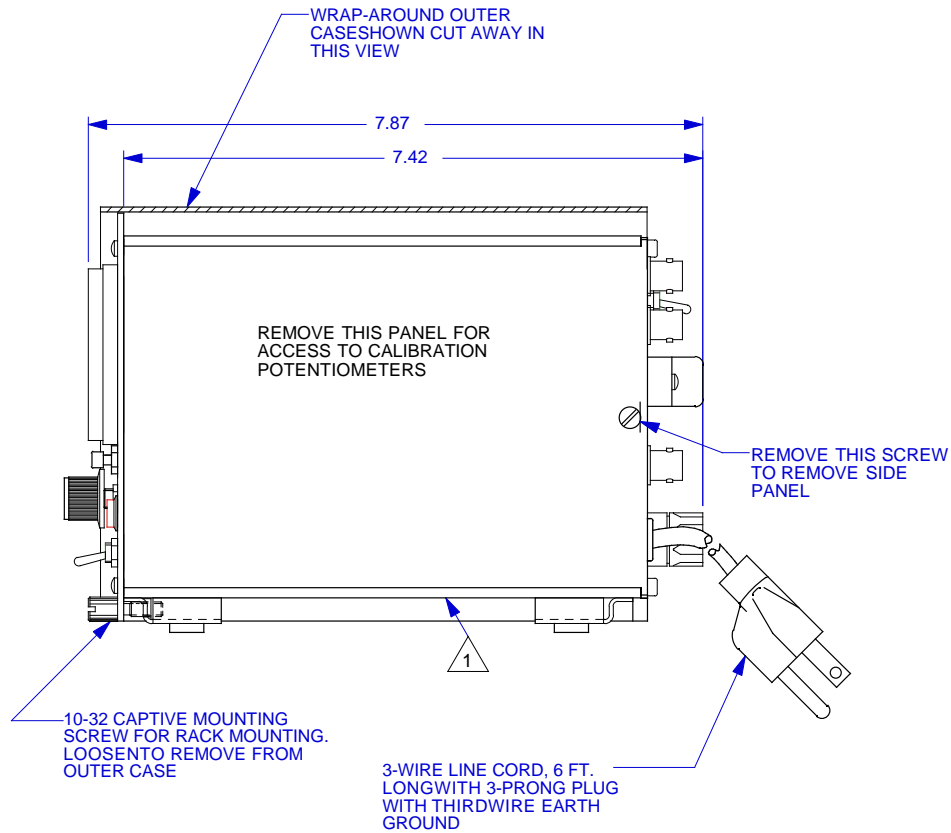
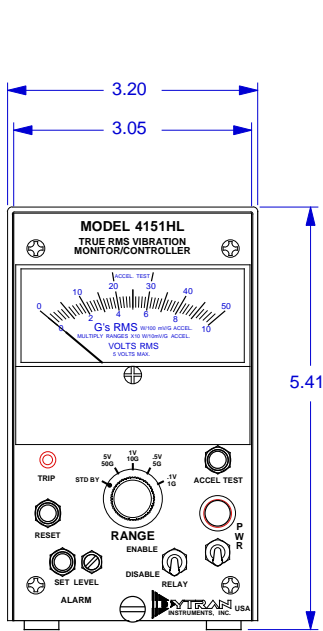
SPECIFICATIONS, MODEL 4151HL TRUE RMS VIBRATION METER

SPECIFICATION	VALUE	UNITS
"G" RANGES [1]	50, 10, 5 & 1	G's
VOLTAGE RANGES (external input jack)	5, 1.0, .50 AND .10	VOLTS, RMS
ACCURACY [2]	± 2	%FS
FREQUENCY RESPONSE, ±%, ACCELEROMETER INPUT , F.S. LEVEL		
50 G RANGE	1 to 240k	Hz
10 G RANGE	1 to 350k	Hz
5 G RANGE	1 to 150k	Hz
1 G RANGE	1 to 28k	Hz
FREQUENCY RESPONSE, ±% EXTERNAL INPUT , F.S. LEVEL		
5.0 VOLT RANGE	1 to 680k	Hz
1.0 VOLT RANGE	1 to 400k	Hz
0.5 g VOLT RANGE	1 to 150k	Hz
0.1 g VOLT RANGE	1 to 30k	Hz
DC OUTPUT VOLTAGE SWING	0 to 10	VDC
OUTPUT IMPEDANCE of 0-10 VDC OUTPUT CIRCUIT	50	OHMS
OUTPUT IMPEDANCE, MONITOR JACK	100	OHMS
INPUT IMPEDANCE, EXTERNAL INPUT	200	kOhms
PANEL METER	TAUT BAND, MOVING COIL, SCALE LENGTH, 2.41 INCHES	
ELECTRICAL JACKS		
SENSOR INPUT	BNC, REAR PANEL	
MONITOR	BNC, FRONT PANEL	
MONITOR	BNC, REAR PANEL	
EXTERNAL INPUT	BNC, REAR PANEL	
0-10 VDC OUTPUT	BNC, REAR PANEL	
SPDT ALARM RELAY, CONTACT RATING	1.0 AMP @ 28 VDC, 0.5 AMP @ 120 VAC	
SENSOR SUPPLY CURRENT	4.0	mA
SENSOR COMPLIANCE VOLTAGE	+20	VDC
SIZE, LESS OUTER CASE (H x W x D) [3]	5.22 x 3.05 x 8.06	INCHES
SIZE, WITH OUTER CASE (H x W x D)	5.50 x 3.12 x 8.06	INCHES
WEIGHT LESS OUTER CASE	2 Lb, 6 Oz	
WEIGHT WITH OUTER CASE	2 Lb, 15 Oz	

[1] "G" ranges cited are valid only when used with any 100 mV/g LIVM (IEPE) accelerometer. Multiply ranges by 10 when using a 10 mV/g LIVM (IEPE) accelerometer.

[2] Meter accuracy only. Accelerometer accuracy will affect system accuracy.

[3] Mounts in standard 19 inch wide equipment rack such as Dytran's Model 4200 rack. Up to 5 units may be mounted in a rack.



REAR VIEW-SHOWN WITHOUT OUTER CASE

2. WEIGHT-WITHOUT OUTER CASE: 2 LBS., 6 OZ
WEIGHT-WITH OUTER CASE: 2 LBS., 15 OZ.

1 WHEN RACK MOUNTED, 4151HL MUST BE SUPPORTED AT THIS SURFACE BY CROSS MEMBER OR OTHER SUPPORT STRUCTURE.

6

DYTRAN INSTRUMENTS, INC.		CHATSORTH, CA.	
SCALE .66X	REV	DATE	ECN
DATE 9-27-96	PART NO.		
DRAWN N.C	CHECKED D.Z.	MATL	
APPROVED	NEXT ASSEMBLY		USED ON
TITLE OUTLINE/INSTALLATION DRAWING, MODEL 4151HL			DWG NO. 127-4151HL
SHEET 1 OF 1			